



### Cable ID: PCF6-10CC-0500-W-001

Test Limit: ISO11801 Channel Class E

Limits Version: V7.11

Date / Time: 2025/10/21 08:14:20

Operator: Impakt S.A - Serwis

Headroom 4.8 dB (NEXT 3,6-4,5)

Cable Type: Cat 6 F/UTP

NVP: 70.0%

Main: Versiv

S/N: 24410021

Software Version: V6.13 Build 2

Calibration Date: 2025/05/28

Adapter: DSX-602 (DSX-CHA004)

S/N: 25073277

### Test Summary: PASS

Remote: Versiv

S/N: 24250049

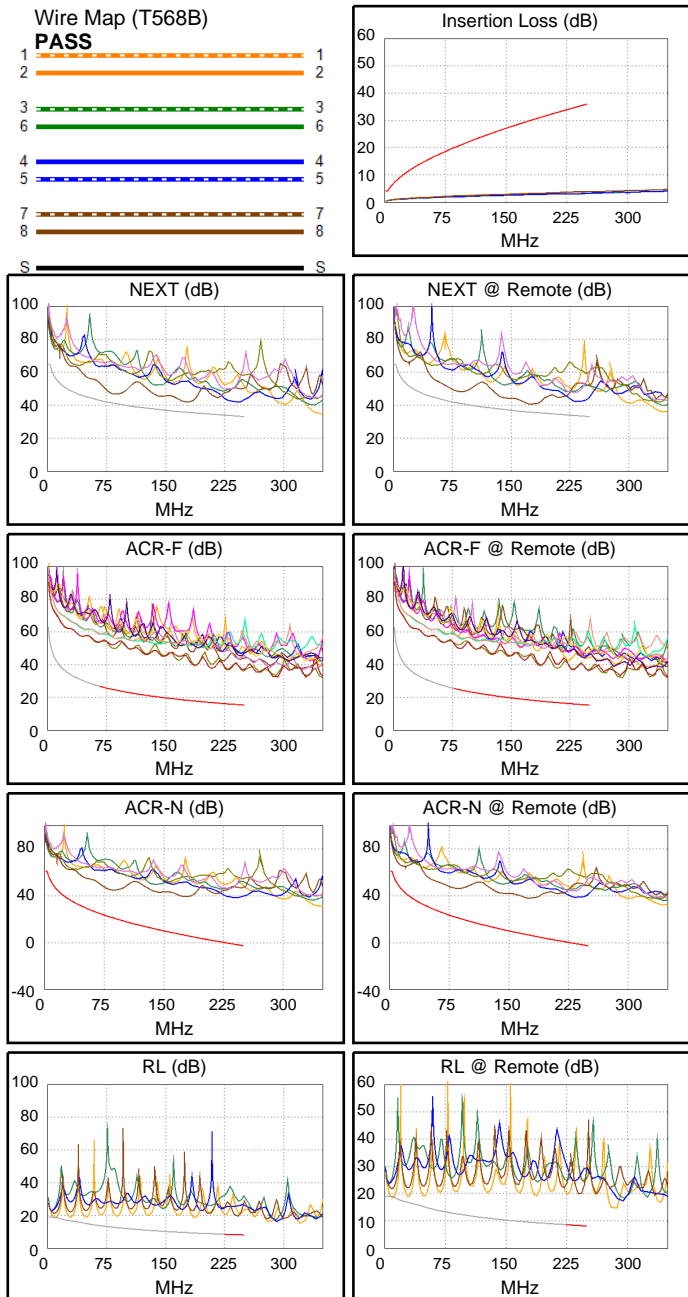
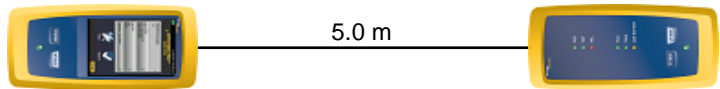
Software Version: V6.13 Build 2

Calibration Date: 2025/05/28

Adapter: DSX-602R (DSX-CHA004)

S/N: 25073276

Length (m), Limit 100.0	[Pair 3,6]	5.0
Prop. Delay (ns), Limit 555	[Pair 7,8]	26
Delay Skew (ns), Limit 50	[Pair 7,8]	2
Resistance (ohms), Limit 25.00	[Pair 7,8]	3.50
Insertion Loss Margin (dB)	[Pair 1,2]	32.2
Frequency (MHz)	[Pair 1,2]	250.0
Limit (dB)	[Pair 1,2]	35.9



Worst Case Margin Worst Case Value

N/A	MAIN	SR	MAIN	SR
Worst Pair	3,6-4,5	3,6-4,5	1,2-7,8	3,6-4,5
<b>NEXT (dB)</b>	5.6	4.8	8.6	4.8
Freq. (MHz)	84.5	175.5	243.0	175.5
Limit (dB)	41.2	35.8	33.3	35.8
Worst Pair	3,6	3,6	1,2	3,6
<b>PS NEXT (dB)</b>	8.3	7.6	11.0	7.7
Freq. (MHz)	86.5	175.0	241.0	175.5
Limit (dB)	38.2	32.9	30.4	32.8

PASS	MAIN	SR	MAIN	SR
Worst Pair	3,6-4,5	3,6-4,5	3,6-4,5	4,5-3,6
<b>ACR-F (dB)</b>	20.7	20.8	20.8	20.9
Freq. (MHz)	229.0	209.0	250.0	249.5
Limit (dB)	16.1	16.9	15.3	15.3
Worst Pair	4,5	3,6	4,5	3,6
<b>PS ACR-F (dB)</b>	23.5	22.9	23.5	23.0
Freq. (MHz)	250.0	248.5	250.0	249.5
Limit (dB)	12.3	12.4	12.3	12.3

PASS	MAIN	SR	MAIN	SR
Worst Pair	1,2-4,5	3,6-4,5	1,2-7,8	3,6-4,5
<b>ACR-N (dB)</b>	20.1	18.6	40.3	31.7
Freq. (MHz)	3.3	10.3	243.0	175.5
Limit (dB)	60.5	49.8	-2.0	6.2
Worst Pair	4,5	3,6	1,2	1,2
<b>PS ACR-N (dB)</b>	20.8	19.7	42.6	41.4
Freq. (MHz)	3.6	11.4	241.0	233.0
Limit (dB)	57.2	46.1	-4.8	-3.9

PASS	MAIN	SR	MAIN	SR
Worst Pair	1,2	1,2	1,2	1,2
<b>RL (dB)</b>	9.3	9.8	9.3	9.8
Freq. (MHz)	187.5	187.5	187.5	187.5
Limit (dB)	9.3	9.3	9.3	9.3

Compliant Network Standards:  
 10BASE-T 100BASE-TX 100BASE-T4  
 1000BASE-T 2.5GBASE-T 5GBASE-T  
 ATM-25 ATM-51 ATM-155  
 100VG-AnyLan TR-4 TR-16 Active  
 TR-16 Passive