



**Cable ID: PCU5-15CC-0500-BK**

Test Limit: ISO11801 Channel Class D

Limits Version: V7.6

Date / Time: 01/13/2022 04:00:38 PM

Operator: BLOQC

Headroom 7.1 dB (NEXT 3,6-7,8)

Cable Type: Cat 5e U/UTP

NVP: 69.0%

Main: Versiv

S/N: 1820302

Software Version: V6.6 Build 2

Calibration Date: 05/27/2021

Adapter: DSX-8000 (DSX-CHA804)

S/N: 20510901

**Test Summary: PASS**

Remote: Versiv

S/N: 1824298

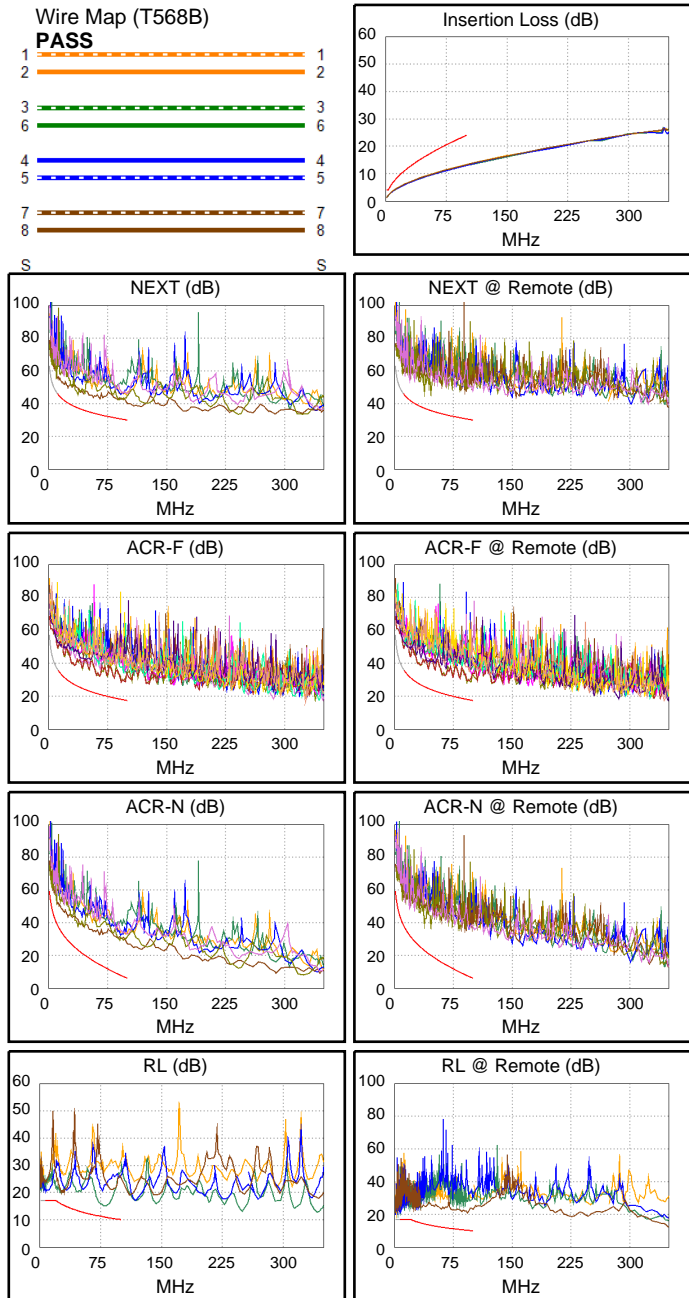
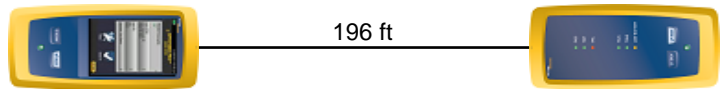
Software Version: V6.6 Build 2

Calibration Date: 05/27/2021

Adapter: DSX-8000R (DSX-CHA804)

S/N: 20510903

Length (ft), Limit 328	[Pair 3,6]	196
Prop. Delay (ns), Limit 555	[Pair 1,2]	298
Delay Skew (ns), Limit 50	[Pair 1,2]	9
Resistance (ohms), Limit 25.00	[Pair 1,2]	12.70
Insertion Loss Margin (dB)	[Pair 1,2]	10.7
Frequency (MHz)	[Pair 1,2]	100.0
Limit (dB)	[Pair 1,2]	24.0



Worst Case Margin Worst Case Value

PASS	MAIN	SR	MAIN	SR
Worst Pair	3,6-7,8	3,6-7,8	3,6-4,5	3,6-7,8
<b>NEXT (dB)</b>	7.1	9.9	9.9	10.6
Freq. (MHz)	37.8	38.0	100.0	46.3
Limit (dB)	37.3	37.3	30.1	35.8
Worst Pair	3,6	3,6	3,6	3,6
<b>PS NEXT (dB)</b>	8.7	12.4	10.7	18.1
Freq. (MHz)	38.0	38.0	99.5	91.3
Limit (dB)	34.3	34.3	27.1	27.8

PASS	MAIN	SR	MAIN	SR
Worst Pair	4,5-3,6	3,6-4,5	4,5-3,6	3,6-4,5
<b>ACR-F (dB)</b>	10.3	10.2	10.5	10.5
Freq. (MHz)	92.5	92.5	97.0	97.0
Limit (dB)	18.1	18.1	17.7	17.7
Worst Pair	3,6	4,5	3,6	4,5
<b>PS ACR-F (dB)</b>	13.2	12.5	13.4	12.5
Freq. (MHz)	1.4	96.5	97.0	96.5
Limit (dB)	51.6	14.7	14.7	14.7

PASS	MAIN	SR	MAIN	SR
Worst Pair	3,6-7,8	3,6-7,8	3,6-4,5	4,5-7,8
<b>ACR-N (dB)</b>	12.2	14.2	20.8	28.1
Freq. (MHz)	3.4	1.0	100.0	100.0
Limit (dB)	50.6	59.3	6.1	6.1
Worst Pair	3,6	3,6	3,6	7,8
<b>PS ACR-N (dB)</b>	13.3	15.2	22.1	28.9
Freq. (MHz)	3.4	1.0	99.8	95.0
Limit (dB)	47.6	56.3	3.1	4.1

PASS	MAIN	SR	MAIN	SR
Worst Pair	4,5	4,5	3,6	7,8
<b>RL (dB)</b>	3.2	4.9	3.9	10.6
Freq. (MHz)	7.5	7.6	78.5	93.0
Limit (dB)	17.0	17.0	11.1	10.3

Compliant Network Standards:  
 10BASE-T      100BASE-TX      100BASE-T4  
 1000BASE-T    2.5GBASE-T      ATM-25  
 ATM-51        ATM-155          100VG-AnyLan  
 TR-4           TR-16 Active      TR-16 Passive