



**Cable ID: PCF6A-10CU-0025**

Date / Time: 03/13/2020 12:33:43 PM

Headroom 12.6 dB (NEXT 36-78)

Test Limit: ISO11801 Channel Class Ea

Cable Type: Cat 7 S/FTP

NVP: 78.0%

Software Version: V6.2 Build 1

Limits Version: V7.2

Calibration Start Date:

Main (Module): 12/03/2018

Remote (Module): 12/03/2018

**Test Summary: PASS**

Model: DSX-8000

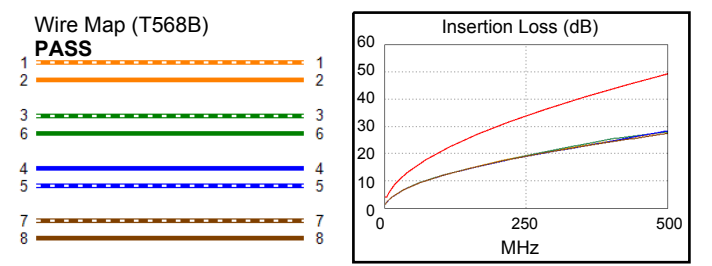
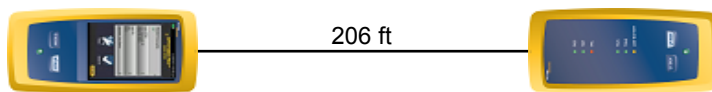
Main S/N: 1820302

Remote S/N: 1824298

Main Adapter: DSX-CHA804

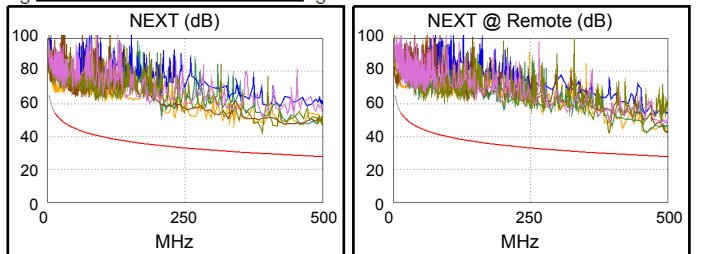
Remote Adapter: DSX-CHA804

Length (ft), Limit 328	[Pair 45]	206
Prop. Delay (ns), Limit 555	[Pair 12]	277
Delay Skew (ns), Limit 50	[Pair 12]	8
Resistance (ohms), Limit 25.00	[Pair 12]	9.38
Insertion Loss Margin (dB)	[Pair 45]	20.8
Frequency (MHz)	[Pair 45]	496.0
Limit (dB)	[Pair 45]	49.1

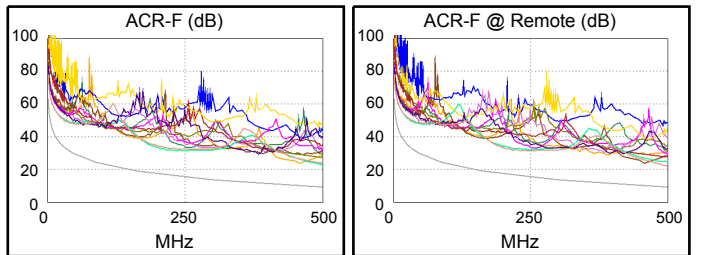


Worst Case Margin Worst Case Value

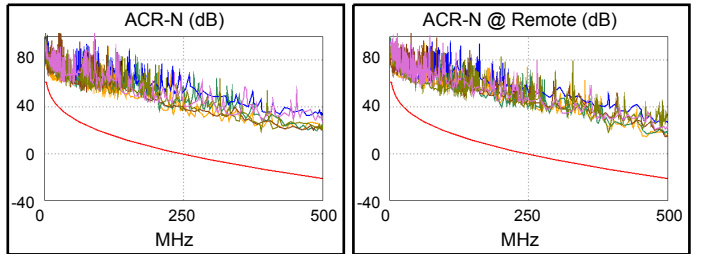
PASS	MAIN	SR	MAIN	SR
Worst Pair	36-78	36-78	36-78	12-36
<b>NEXT (dB)</b>	12.8	12.6	12.8	12.7
Freq. (MHz)	390.0	393.0	390.0	456.0
Limit (dB)	29.8	29.7	29.8	28.6
Worst Pair	36	12	36	12
<b>PS NEXT (dB)</b>	14.6	13.6	14.6	13.6
Freq. (MHz)	390.0	462.0	390.0	462.0
Limit (dB)	26.8	25.4	26.8	25.4



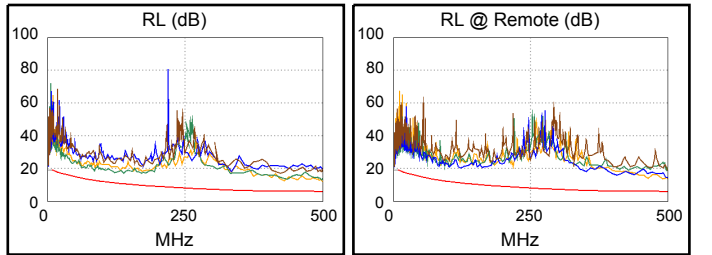
PASS	MAIN	SR	MAIN	SR
Worst Pair	12-36	78-45	45-78	78-45
<b>ACR-F (dB)</b>	13.2	12.8	13.6	12.8
Freq. (MHz)	456.0	498.0	498.0	498.0
Limit (dB)	10.1	9.3	9.3	9.3
Worst Pair	45	45	45	45
<b>PS ACR-F (dB)</b>	15.2	15.1	15.2	15.1
Freq. (MHz)	500.0	500.0	500.0	500.0
Limit (dB)	6.3	6.3	6.3	6.3



PASS	MAIN	SR	MAIN	SR
Worst Pair	12-36	36-45	36-78	12-36
<b>ACR-N (dB)</b>	13.1	12.2	31.9	32.7
Freq. (MHz)	3.6	3.4	390.0	456.0
Limit (dB)	59.7	60.2	-13.3	-18.3
Worst Pair	36	36	36	12
<b>PS ACR-N (dB)</b>	12.4	12.5	35.3	33.8
Freq. (MHz)	3.4	3.5	430.0	462.0
Limit (dB)	57.7	57.5	-19.4	-21.8



PASS	MAIN	SR	MAIN	SR
Worst Pair	36	12	12	12
<b>RL (dB)</b>	5.7	7.3	6.0	7.3
Freq. (MHz)	85.3	466.0	500.0	466.0
Limit (dB)	12.7	6.0	6.0	6.0



Compliant Network Standards:

10BASE-T	100BASE-TX	100BASE-T4
1000BASE-T	2.5GBASE-T	5GBASE-T
10GBASE-T	ATM-25	ATM-51
ATM-155	100VG-AnyLan	TR-4
TR-16 Active	TR-16 Passive	